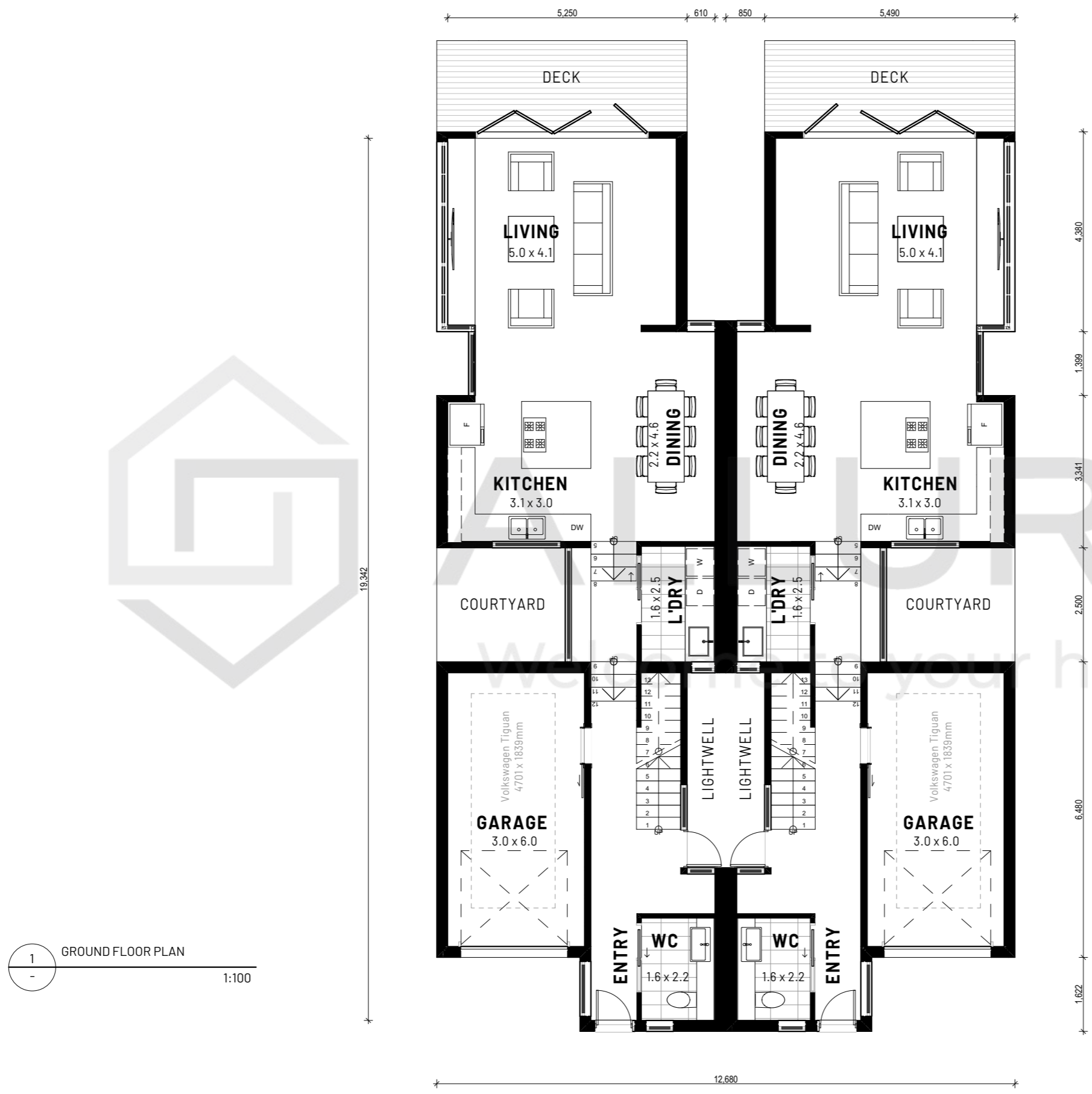








**DISCLAIMER:**  
 ALL IMAGES, FACADES & DRAWINGS WHERE PICTURED ARE FOR ILLUSTRATIVE PURPOSES ONLY & MAY NOT DEPICT ACTUAL INCLUDED IN PRICES. IT IS AT CLIENTS DISCRETION TO SELECT INCLUSION FEATURES WITHIN STANDARD RANGES & IF OPTIONAL UPGRADES ARE REQUESTED, ADDITIONAL COSTS WILL INCUR.



<b>GROSS FLOOR AREA UNIT 1</b>	
GROUND FLOOR LIVING:	73.38m <sup>2</sup>
GROUND FLOOR GARAGE:	18.00m <sup>2</sup>
FIRST FLOOR LIVING:	109.23m <sup>2</sup>
<b>TOTAL FLOOR AREA:</b>	<b>200.61m<sup>2</sup></b>
<b>BUILDING QUANTITIES UNIT 1</b>	
GROUND FLOOR	106.61m <sup>2</sup>
FIRST FLOOR	129.95m <sup>2</sup>
PORCH / ALFRESCO / BALCONY	10.98m <sup>2</sup>
<b>TOTAL AREA</b>	<b>247.54m<sup>2</sup></b>

 **4 BED**  
  **2.5 BATH**  
  **1 LIVING**  
  **0 STUDY**  
  **1 ALFRESCO**  
  **1 CAR**



# VICTORIA DUPLEX

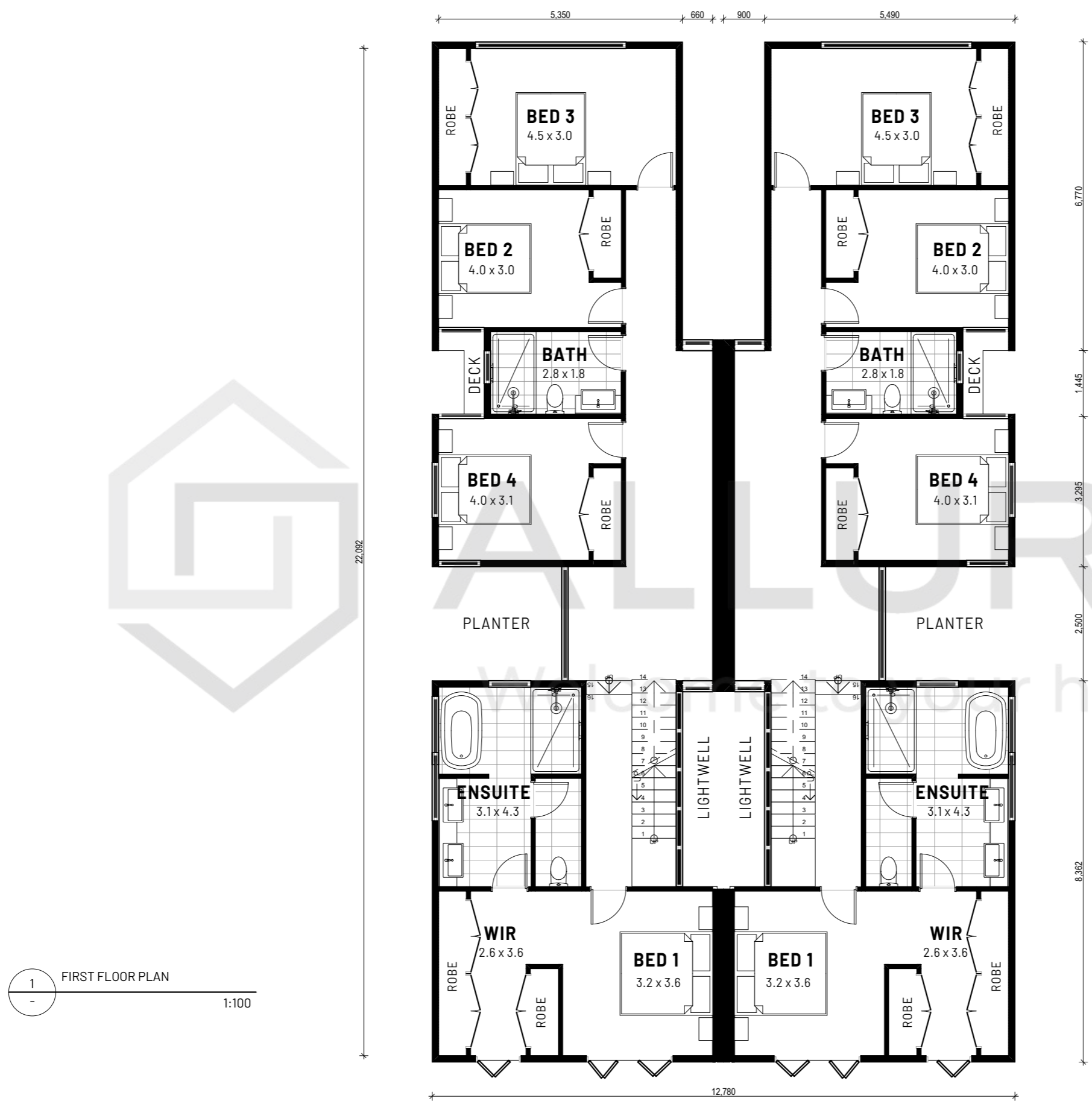
THESE DRAWINGS REMAIN THE PROPERTY OF ALLURA HOMES PTY LTD AND CAN NOT BE ALTERED OR REPRODUCED WITHOUT WRITTEN PERMISSION

<b>GROSS FLOOR AREA</b>	
GROUND FLOOR LIVING:	146.76m <sup>2</sup>
GROUND FLOOR GARAGE:	36m <sup>2</sup>
FIRST FLOOR LIVING:	218.46m <sup>2</sup>
<b>TOTAL FLOOR AREA:</b>	<b>401.22m<sup>2</sup></b>
<b>BUILDING QUANTITIES</b>	
GROUND FLOOR	213.22m <sup>2</sup>
FIRST FLOOR	259.90m <sup>2</sup>
PORCH / ALFRESCO / BALCONY	21.96m <sup>2</sup>
<b>TOTAL AREA</b>	<b>495.08m<sup>2</sup></b>

**FOR:  
 SKETCH ONLY**







SCALE	PROJECT RESIDENCE
DATE 13.12.2019	ADDRESS CLIENT ADDRESS
	REVISION A

**DISCLAIMER:**  
 ALL IMAGES, FACADES & DRAWINGS WHERE PICTURED ARE FOR ILLUSTRATIVE PURPOSES ONLY & MAY NOT DEPICT ACTUAL INCLUDED IN PRICES. IT IS AT CLIENTS DISCRETION TO SELECT INCLUSION FEATURES WITHIN STANDARD RANGES & IF OPTIONAL UPGRADES ARE REQUESTED, ADDITIONAL COSTS WILL INCUR.



1 FIRST FLOOR PLAN  
 1:100

<b>GROSS FLOOR AREA UNIT 1</b>	
GROUND FLOOR LIVING:	73.38m <sup>2</sup>
GROUND FLOOR GARAGE:	18.00m <sup>2</sup>
FIRST FLOOR LIVING:	109.23m <sup>2</sup>
<b>TOTAL FLOOR AREA:</b>	<b>200.61m<sup>2</sup></b>
<b>BUILDING QUANTITIES UNIT 1</b>	
GROUND FLOOR	106.61m <sup>2</sup>
FIRST FLOOR	129.95m <sup>2</sup>
PORCH / ALFRESCO / BALCONY	10.98m <sup>2</sup>
<b>TOTAL AREA</b>	<b>247.54m<sup>2</sup></b>

 **4 BED**  
  **2.5 BATH**  
  **1 LIVING**  
  **0 STUDY**  
  **1 ALFRESCO**  
  **1 CAR**



# VICTORIA DUPLEX

THESE DRAWINGS REMAIN THE PROPERTY OF ALLURA HOMES PTY LTD AND CAN NOT BE ALTERED OR REPRODUCED WITHOUT WRITTEN PERMISSION

<b>GROSS FLOOR AREA</b>	
GROUND FLOOR LIVING:	146.76m <sup>2</sup>
GROUND FLOOR GARAGE:	36m <sup>2</sup>
FIRST FLOOR LIVING:	218.46m <sup>2</sup>
<b>TOTAL FLOOR AREA:</b>	<b>401.22m<sup>2</sup></b>
<b>BUILDING QUANTITIES</b>	
GROUND FLOOR	213.22m <sup>2</sup>
FIRST FLOOR	259.90m <sup>2</sup>
PORCH / ALFRESCO / BALCONY	21.96m <sup>2</sup>
<b>TOTAL AREA</b>	<b>495.08m<sup>2</sup></b>

**FOR:  
 SKETCH ONLY**

SCALE	PROJECT RESIDENCE
DATE 13.12.2019	ADDRESS CLIENT ADDRESS
	REVISION A